

# Fresh Palette

Free Pattern Sheet



Finished Large Quilt Size: 83 1/4" x 95"



Finished Small Quilt Size: 60" x 60"

Fabrics and Quilts  
designed by:  
Carrie Nelson

of **MISS ROSIE'S  
QUILT CO.**



**Henry Glass & Co.**

49 West 37th Street  
New York, NY 10018  
tel: 212-686-5194  
fax: 212-532-3525  
New York: 800-294-9495  
[www.henryglassfabrics.com](http://www.henryglassfabrics.com)

# Fresh Palette



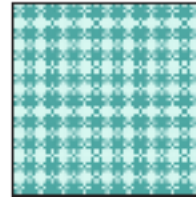
5383-8  
White Floral



5383-11  
Blue Floral



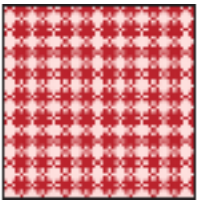
5383-44  
Yellow Floral



5384-11  
Blue Check



5384-66  
Green Check



5384-88  
Red Check



5385-22  
Pink Leaves  
Print



5385-66  
Green Leaves  
Print



5386-8  
White Diamond  
Print



5386-11  
Blue Diamond  
Print



5386-44  
Yellow Diamond  
Print



5387-1  
Blue Mosaic



5387-8  
Red Mosaic



5388-22  
Pink Mosaic



5388-66  
Green Mosaic



5389-26  
White Stripe



5389-44  
Yellow Stripe



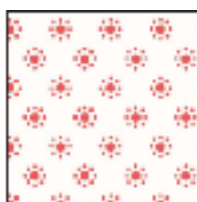
5390-1  
Blue Dot



5390-2  
Pink Dot



5390-6  
Green Dot



5390-8  
Red Dot

# Fresh Palette - Large Quilt

Finished Quilt Size: 83 3/4" x 95"

Finished Block Size: 9" x 9"

## Materials

- 2 3/8 yards Blue Floral  
1 yard Red Check  
1/2 yard EACH of: Blue Mosaic, White Stripe,  
White Diamond Print, Blue Dot, Pink Dot,  
Green Dot, Red Dot, Green Mosaic,  
Blue Diamond Print, and Green Leaves Print  
3/8 yard EACH of: Yellow Floral, Yellow Stripe, Red Mosaic,  
White Floral, Yellow Diamond Print, and Pink  
Mosaic  
1/4 yard EACH of: Pink Leaves Print, Green Check, and  
Blue Check  
9 yards coordinating fabric for quilt backing

## Cutting Instructions

*Please note: all strips are cut across the width of the fabric from selvage edge to selvage edge.*

### From the blue floral, cut:

- (9) 7 1/2" strips for the outer border.  
(3) 2 3/4" strips. Recut into (8) 2 3/4" x 9 1/2" pieces  
and (8) 2 3/4" x 5" pieces.

### From the red check, cut:

- (4) 2 3/4" strips. Recut into (56) 2 3/4" x 2 3/4" squares.  
(9) 2 1/4" strips for the binding.

### From EACH of the blue mosaic, white stripe, and white diamond prints, cut:

- (4) 2 3/4" strips. Recut into (14) 2 3/4" x 9 1/2" sashing  
pieces.

### From EACH of the blue dot, pink dot, and green dot, cut:

- (5) 2 3/4" strips. Recut into (14) 2 3/4" x 9 1/2" sashing  
pieces and (21) 2 3/4" x 2 3/4" squares.

### From the red dot, cut:

- (5) 2 3/4" strips. Recut into (13) 2 3/4" x 9 1/2" sashing  
pieces and (21) 2 3/4" x 2 3/4" squares.

### From EACH of the green mosaic and blue diamond print, cut:

- (4) 2 3/4" strips. Recut into (10) 2 3/4" x 9 1/2" pieces  
and (10) 2 3/4" x 5" pieces.

### From the green leaves print, cut:

- (5) 2 3/4" strips. Recut into (8) 2 3/4" x 9 1/2" strips,  
(8) 2 3/4" x 5" strips, and (21) 2 3/4" x 2 3/4" squares.

### From EACH of the yellow floral, yellow stripe, red mosaic, white floral, yellow diamond print, and pink mosaic, cut:

- (3) 2 3/4" strips. Recut into (8) 2 3/4" x 9 1/2" pieces and  
(8) 2 3/4" x 5" pieces.

### From EACH of the pink leaves print, green check, and blue check, cut:

- (2) 2 3/4" strips. Recut into (21) 2 3/4" x 2 3/4" squares.

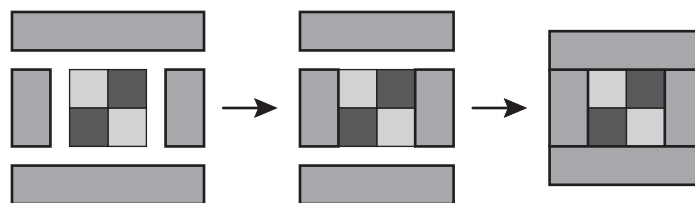
## Sewing Instructions

*All seams are sewn using 1/4" seam allowance with pieces held right sides together and raw edges even.*

1. Make two stacks of 2 3/4" squares. Place the pink dot, blue dot, red dot, and green dot squares in one pile. Place the green check, blue check, pink leaves print, and green leaves print squares in the second pile. Select (1) square from each pile and stitch them together. Repeat once. Sew the two units together to make one four-patch block center with the light and dark squares placed as shown below. Repeat to make a total of (42) block centers.



2. Arrange the fabrics into matching sets of (2) 2 3/4" x 5" pieces and (2) 2 3/4" x 9 1/2" pieces. Make (42) matching sets. Using one set, stitch 2 3/4" x 5" pieces to opposite sides of a block center unit from step 1. Stitch 2 3/4" x 9 1/2" pieces to the top and bottom to complete the block. Repeat to make a total of (42) blocks.



## Quilt Assembly

1. To make (1) block row, stitch together (6) blocks and (7) 2 3/4" x 9 1/2" sashing pieces, alternating the two types of units. Repeat to make a total of (7) block rows.
2. To make (1) sashing row, stitch together (6) 2 3/4" x 9 1/2" sashing pieces, and (7) 2 3/4" x 2 3/4" red check squares, alternating the two types of units. Repeat to make a total of (8) sashing rows.
3. Stitch the block and sashing rows together to complete the body of the quilt top.
4. Trim the selvages from the 7 1/2" blue floral strips. Sew the strips together end to end to make a long 7 1/2" strip. From this long strip, cut (2) 81 1/2" and (2) 84 1/4" lengths. Stitch the shorter lengths to the right and left sides of the quilt top. Stitch the longer lengths to the top and bottom of the quilt top.
5. Layer the completed quilt top with batting and backing and quilt as desired.
6. Trim the finished quilt and bind using the 2 1/4" red check strips.

# Fresh Palette - Small Quilt or Table Topper

Finished Quilt Size: 60" x 60"

Finished Block Size: 6" x 6"

## Materials

1 ½ yards White Floral

¾ yard Red Check

¼ yard EACH of: Blue Dot, Pink Dot, Green Dot, Red Dot, Blue Mosaic, White Stripe, White Diamond Print, Green Leaves Print, Blue Floral, Yellow Floral, Pink Mosaic, Green Mosaic, Blue Diamond Print, Yellow Diamond Print, Yellow Stripe, Red Mosaic, Pink Leaves Print, Green Check, and Blue Check

4 yards coordinating fabric for quilt backing

## Cutting Instructions

*Please note: all strips are cut across the width of the fabric from selvage edge to selvage edge.*

### From the blue floral, cut:

- (6) 7 ¼" strips for the outer border.
- (2) 2" strips. Recut into (6) 2" x 6 ½" pieces and (6) 2" x 3 ½" pieces.

### From the red check, cut:

- (7) 2 ¼" strips for the binding.
- (3) 2" strips. Recut into (49) 2" x 2" squares.

### From EACH of the blue dot, pink dot, and red dot, cut:

- (3) 2" strips. Recut into (12) 2" x 6 ½" sashing pieces and (18) 2" x 2" squares.

### From the green dot, cut:

- (3) 2" strips. Recut into (11) 2" x 6 ½" sashing pieces and (18) 2" x 2" squares.

### From the blue mosaic, cut:

- (3) 2" strips. Recut into (13) 2" x 6 ½" sashing pieces.

### From EACH of the white stripe and white diamond print, cut:

- (2) 2" strips. Recut into (12) 2" x 6 ½" sashing pieces.

### From the green leaves print, cut:

- (3) 2" strips. Recut into (6) 2" x 6 ½" pieces, (6) 2" x 3 ½" pieces, and (18) 2" x 2" squares.

### From EACH of the blue floral, yellow floral, pink mosaic, green mosaic, blue diamond print, and yellow diamond print, cut:

- (2) 2" strips. Recut into (8) 2" x 6 ½" pieces and (8) 2" x 3 ½" pieces.

### From EACH of the yellow stripe and red mosaic, cut:

- (2) 2" strips. Recut into (6) 2" x 6 ½" pieces and (6) 2" x 3 ½" pieces.

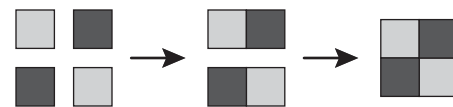
### From EACH of the pink leaves print, green check, and blue check, cut:

- (1) 2" strip. Recut into (18) 2" x 2" squares.

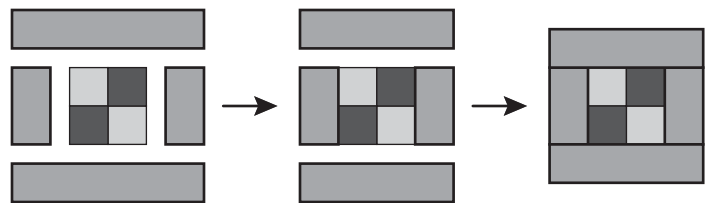
## Sewing Instructions

*All seams are sewn using 1/4" seam allowance with pieces held right sides together and raw edges even.*

1. Make two stacks of 2" squares. Place the pink dot, blue dot, red dot, and green dot squares in one pile. Place the green check, blue check, pink leaves print, and green leaves print squares in the second pile. Select (1) square from each pile and stitch them together. Repeat once. Sew the two units together to make one four-patch block center with the light and dark squares placed as shown below. Repeat to make a total of (36) block centers.



2. Arrange the fabrics into matching sets of (2) 2" x 3 ½" pieces and (2) 2" x 6 ½" pieces. Make (36) matching sets. Using one set, stitch 2" x 3 ½" pieces to opposite sides of a block center unit from step 1. Stitch 2" x 6 ½" pieces to the top and bottom to complete the block. Repeat to make a total of (36) blocks.



## Quilt Assembly

1. To make (1) block row, stitch together (6) blocks and (7) 2" x 6 ½" sashing pieces, alternating the two types of units. Repeat to make a total of (6) block rows.
2. To make (1) sashing row, stitch together (6) 2" x 6 ½" sashing pieces, and (7) 2" x 2" red check squares, alternating the two types of units. Repeat to make a total of (7) sashing rows.
3. Stitch the block and sashing rows together to complete the body of the quilt top.
4. Trim the selvages from the 7 ¼" white floral strips. Sew the strips together end to end to make a long 7 ¼" strip. From this long strip, cut (2) 47" and (2) 60 ½" lengths. Stitch the shorter lengths to the right and left sides of the quilt top. Stitch the longer lengths to the top and bottom of the quilt top.
5. Layer the completed quilt top with batting and backing and quilt as desired.
6. Trim the finished quilt and bind using the 2 ¼" red check strips.